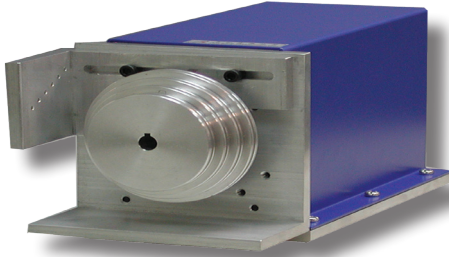




## AT2 Servo Positioning Throttle Actuator

### Features:

- Permanent Magnet DC Servo Motor
- Reduction Gearbox
- Servo Potentiometer



### Description:

The AT2 is an enclosed DC servo motor driven Throttle Actuator that forms part of the Dynamometer and Throttle control system. The actuator provides performance suitable for applications ranging from small two stroke engines up to heavy diesels and racing engines.

Position feedback is provided by the internally mounted servo potentiometer.

The direct coupling of the potentiometer to the output shaft ensures accuracy.

The unit is simple to install with one electrical connector, and simple attachment of the throttle cable.

Throttle cables are available separately with various fittings.

The AT2 can be mounted in any plane. With more engines moving to " Fly By Wire " throttle control, the AT2 can also be used to control the vehicles throttle potentiometer directly.

Adaptation plates can be made for your particular application if necessary.



## AT2 Servo Positioning Throttle Actuator

### Specification:

- At2-N1 Throttle Actuator
  - 15N-F Pull Capability
  - $0^{\circ} \sim 180^{\circ}$  In 250 mSec
  - Total Weight: 12 Kg
  - Dimensions: 15" × 6" × 6"
- Actuator Model And Option
  - Model At2-N1: Throttle Actuator
  - Model At2-SE: Engine Dynamometer Throttle Actuator With Stand
  - Model At2-SC: Bick Chassis Dynamometer Throttle Actuator With Stand
  - Model At2-CIXX: Cable Length XX Meter

